

EQ Resources (tungsten): FCF in sight | EQR, mcap \$91m, reiterate BUY



| | | |
|------------------------|---|--------------|
| COMPANY | EQ Resources (ASX:EQR) | 4 April 2023 |
| EVENT | Resource and Company Update Ahead of Open Pit Mining | |
| LINK SECTOR RPT | Tungsten Industry - A critical renaissance (March-23) | |
| LINK EQR REPORT | EQ Resources: Small start, significant potential (Dec-22) | |

Ahead of starting open pit operations, EQ Resources has released a **significant** Mineral Resource update.

- An increase in total in-situ **Mineral Resource of ~30%**,
- An increase in **Indicated** Category by **64%** (to ~10 million mtu of WO3),
- This follows the recent 24'000 metre diamond drilling campaign which revealed some industry leading higher grade results at depth (8.65m @ 0.56% WO3, 18.24m @ 1.00% WO3).
- The increase in Indicated Resource Classification is key to potential conversion into Mineral Reserves so as to **extend EQR's modest beginnings (of a 4-year reserve life)**.

EQR has also updated its near-term outlook as it approaches first open pit mining:

- Mining **contractor** is set to fully mobilize in **May**
- Open cut **mining** is on track to commence in **June**
- Year 1 **production guidance** issued: 760kt ore mined at 0.44% WO3.

Figure: Mt Carbine MRE April 2023

| Orebody | Resource Classification | Tonnes (Mt) | Grade (%WO3) | WO3 (mtu) |
|---------------------|-------------------------|--------------|--------------|------------------|
| Low-Grade Stockpile | Indicated | 10.126 | 0.075 | 759,450 |
| | Indicated | 2.75 | 0.07 | 178,517 |
| | Inferred | 0.83 | 0.06 | 53,789 |
| | Subtotal | 13.71 | 0.07 | 991,756 |
| In-Situ | Indicated | 18.06 | 0.30 | 5,405,901 |
| | Inferred | 10.68 | 0.30 | 3,217,311 |
| | Subtotal | 28.74 | 0.30 | 8,623,212 |
| All | Total | 42.45 | | 9,614,968 |

Notes:

1. Total Estimates are rounded to reflect confidence and resource categorisation
2. Classification of Mineral Resources incorporates the terms and definitions from the Australasian Code for Reporting of Exploration Results, Mineral Resources and Ore Reserves (JORC Code, 2012) published by the Joint Ore Reserve Committee (JORC)
3. No uppercut was applied to individual assays for this resource; lower cuts of 0.05% & 0.08% WO3 were applied to the resource and reported as Low Grade In-situ and In Situ respectively. These cuts are where mineralisation forms distinct vein zones.
4. Drilling used in this methodology was all diamond drilling with 1/2 core sent according to geological intervals to ALS for XRF-15b analysis
5. Resource estimation was completed using the Kriging Variable Orientation Estimation Methodology
6. Indicated spacing is approximately 30 x 30m inferred is approximately 60 x 60m.
7. The deposit is sheeted vein system with subparallel zones of quartz tungsten mineralisation that extends for >1.2km in length and remains open to the west and north. At depth the South Wall Fault cuts the Iolanthe to Johnson's veins but the Iron Duke zones remain open to depth.

Source: ASX

Track record of positive updates: This Resource increase follows on from other recent updates confirming EQ's ability to deliver on expectations:

- **Fully Funded Development Confirmed:** \$5m Drawn from Royalty Pre-payment Agreement. Plus \$4.2m due to be received from Critical Minerals Grant Program (31-March)
- Mining Lease Renewed 19 years (24-March)
- **\$2.6m in Revenue** from Tungsten and Quarry Rock Sales 6 months to 31-Dec Half Year (15-March)
- Regulatory Approval to Commence Open Pit Mining (6-March)
- **High grade mineralisation identified** (27-Feb)

Where to from here? FCF in sight...

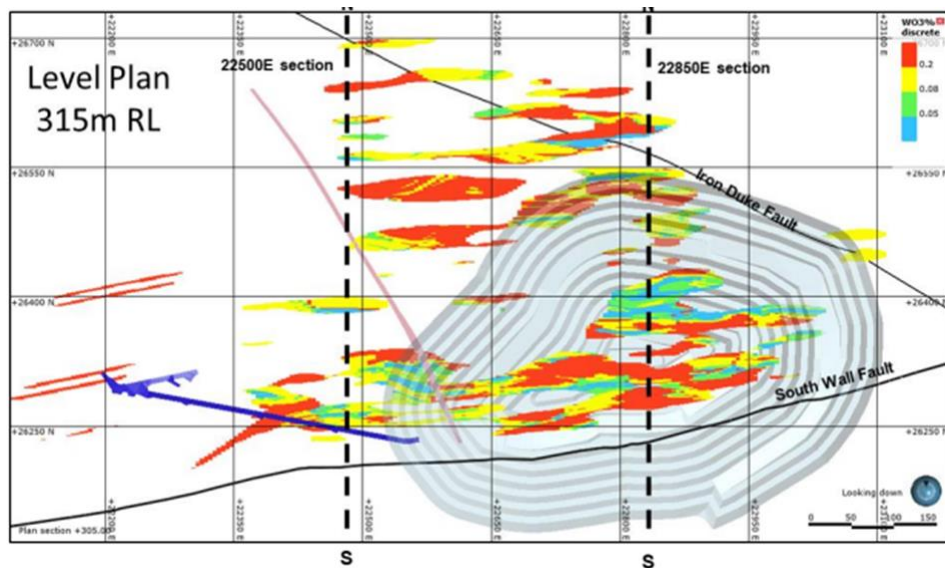
- Expect an **updated mining Reserve by mid-year**. We already model 8 years of open cut mining within our ~\$200m or 12c valuation, so for us this should be confirmatory (or otherwise) of our positive view on valuation.
- The high-grade drilling results at depth also indicate a **long-term underground extension of Mt Carbine is likely**, providing other long term valuation upside.
- This should see a step change in the Mt Carbine project from modest beginnings as a tailings processing operation, into a multi-year open cut and underground mining project capable of being financed from FCF.

Same tonnage, more concentrate? As tailings swapped out for mined ore.

The risks of restart of the open pit are top of mind given the tumult we see elsewhere in the global tungsten industry (refer Tungsten West's recent recapitalization announcement). Our risk assessment discussions with EQR management broadly confirm:

- **Fully funded** development with drawdowns from royalty and grant agreements announced.
- Processing risk low given tailings have been processed for 18 months now ("trail mining") and plant throughput to be unchanged except for the introduction of roll crushers and more jigs. The company has already processed higher 0.3% material in recent months within expected recoveries (up from the 0.07% material currently).
- Visibility on **1st year production** with guidance 760kt @ 0.44% WO₃ to be sourced from a low risk pit floor location. This production guidance is inline with our estimates.
- Open pit has been successfully dewatered, mining fleet and contractor staff sourced and on schedule.
- **FCF in sight:** Management are confident that as first production commences, profitability will follow fast as tungsten prices \$320-\$330/MTU are well over cost of production ~\$170/MTU (PAC estimate).
- We reiterate our positive view on EQR.

Figure: Higher Grade "Pit Floor" Material to be Mined in Year 1



Source: ASX

Meanwhile in the UK

Tungsten West (LSE:TUN) shares were down 53% on 3-April as they launched a recapitalisation plan, largely due to capex inflation and the difficulty in finding finance for a vast lower grade (0.12%) tungsten mine. We profiled the company and its large Hemerdon Mine redevelopment in our recent sector note on page 13. Previous guidance was to commission production later this year. This development highlights that despite wide margins currently on offer from tungsten mining, it remains notoriously difficult to get a tungsten mine financed, developed and into production including successful process plant realisations. This is covered in our recent sector note: [Tungsten Industry - A critical renaissance](#) (March-23)

James Gurry - PAC Partners

Director / Senior Analyst

Mobile: +61 451 349 688

Level 29, 360 Collins Street , Melbourne VIC 3000

Disclosure of Economic Interests

The views expressed in this research report accurately reflect the personal views of about the subject issuer and its securities. No part of the analyst's compensation was, is or will be directly or indirectly related to any recommendation or view expressed in this report.

The following person(s) DOES hold an economic interest in the securities covered in this report or other securities issued by the subject issuer which may influence this report: the author of this report – **James Gurry**

Disclaimer PAC Partners Securities Pty Ltd. (“PAC Partners” , “PAC” or “PPS”) is a Corporate Authorised Representative of PAC Asset Management Pty Ltd holder of an Australian Financial Services Licence (AFSL No. 335 374).

The information contained in this report is provided by PAC Partners to Wholesale Investors only. Retail investor and third party recipients should not rely, directly or indirectly, on this report. Users of this research

report should not act on any content or recommendation without first seeking professional advice. Whilst the report has been prepared with all reasonable care from sources which we believe are reliable, no responsibility or liability is accepted by PAC Partners, for any errors or omissions or misstatements however caused. Any opinions, forecasts or recommendations reflect our judgement and assumptions at the date of publication or broadcast and may change without notice. This report is not and should not be construed as an offer to sell or the solicitation of an offer to purchase or subscribe for any investment. This publication contains general securities advice. In preparing our Content it is not possible to take into consideration the investment objectives, financial situation or particular needs of any individual user. Access of this report does not create a client relationship between PAC Partners and the user. Before making an investment decision on the basis of this advice, you need to consider, with or without the assistance of a securities adviser, whether the advice in this publication is appropriate in light of your particular investment needs, objectives and financial situation. PAC and its associates within the meaning of the Corporations Act may hold securities in the companies referred to in this publication. PAC believes that the advice and information herein is accurate and reliable, but no warranties of accuracy, reliability or completeness are given (except insofar as liability under any statute cannot be excluded). No responsibility for any errors or omissions or any negligence is accepted by PAC or any of its directors, employees or agents. Any content is not for public circulation or reproduction, whether in whole or in part and is not to be disclosed to any person other than the intended user, without the prior written consent of PAC Partners.

Disclosure of Corporate Involvement

PAC Partners acted as Joint Lead Manager to both the November 2022 A\$20m Institutional Placement and the October 2021 A\$31m Placement & SPP by Group 6 Metals Ltd (G6M). The Joint Lead Manager received management and distribution fees and was issued with broker options (3,186,276) for nil consideration with an exercise price of \$0.28 and exercisable at any time over a three (3) year period from the date of issue (23-Jan-2023). PAC Partners and its associates own securities in G6M. PAC Partners does and seeks to do business with the companies covered in the research. PAC may receive commissions from dealing in securities mentioned in this report. As a result, investors should be aware that PAC Partners may have a conflict of interest that could affect the objectivity of this report.

For more information about PAC Partners please visit www.pacpartners.com.au

DISCLAIMER: The information contained in this email is confidential and is intended solely for the addressee. If you are not the named addressee, you must not disclose or use in any way the information in the email. If you have received this email by mistake, please notify the sender immediately by reply e-mail and delete this email and destroy any printed copy. PAC Partners Securities Pty Ltd, a Corporate Authorised Representative of PAC Asset Management Pty Ltd holder of an Australian Financial Services Licence (AFSL No. 335 374) and their related entities and each of their respective directors, officers and agents ("PAC Partners") believe that the information contained in this message and its attachments have been obtained from reliable sources and that any estimates, opinions, conclusions or recommendations are reasonably held at the time of compilation. No warranty is made as to the accuracy of the information in this message and, to the maximum extent permitted by law, PAC Partners disclaims all liability for any loss or damage which may be suffered by any recipient through relying on anything contained or omitted from this message. PAC Partners does not warrant the attached files are free from computer viruses or other defects and is provided on the basis that the user assumes all responsibility for any loss, damage or consequence resulting from use.
